



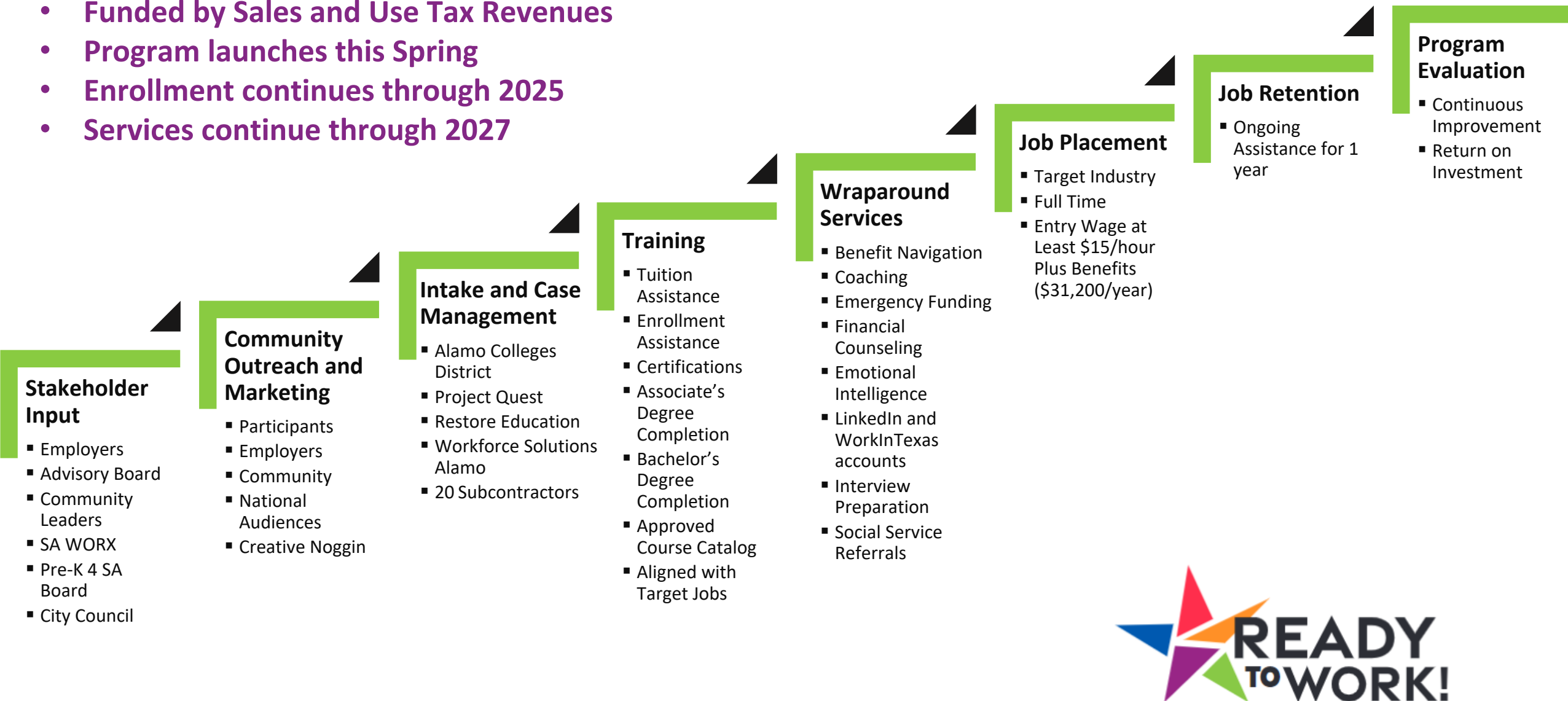
Pre-K 4 SA Board

Alejandra Lopez
Assistant City Manager
City of San Antonio



Ready to Work Overview

- Funded by Sales and Use Tax Revenues
- Program launches this Spring
- Enrollment continues through 2025
- Services continue through 2027



Forecast Assumptions

Over **39,000** Applicants to be served through intake and initial assessment

Over **28,000** Participants to be enrolled in courses with subsidized tuition, emergency funding and wraparound services

Over **15,000** Training Completers to find well-paid jobs in high-demand careers

Original financial forecast was based on Train for Jobs SA experience and discussions with RTW Advisory Board.

Revised financial forecast is based on RFP responses.



Participant Funding Caps

Certificate Program

- Training resulting in industry-recognized credentials
- One-time cap of \$5,000 per Participant

Associate’s Degree Program

- Annual cap of \$2,200 per Participant
- Individual Participant cap of \$6,600
- Not available for AlamoPROMISE scholars

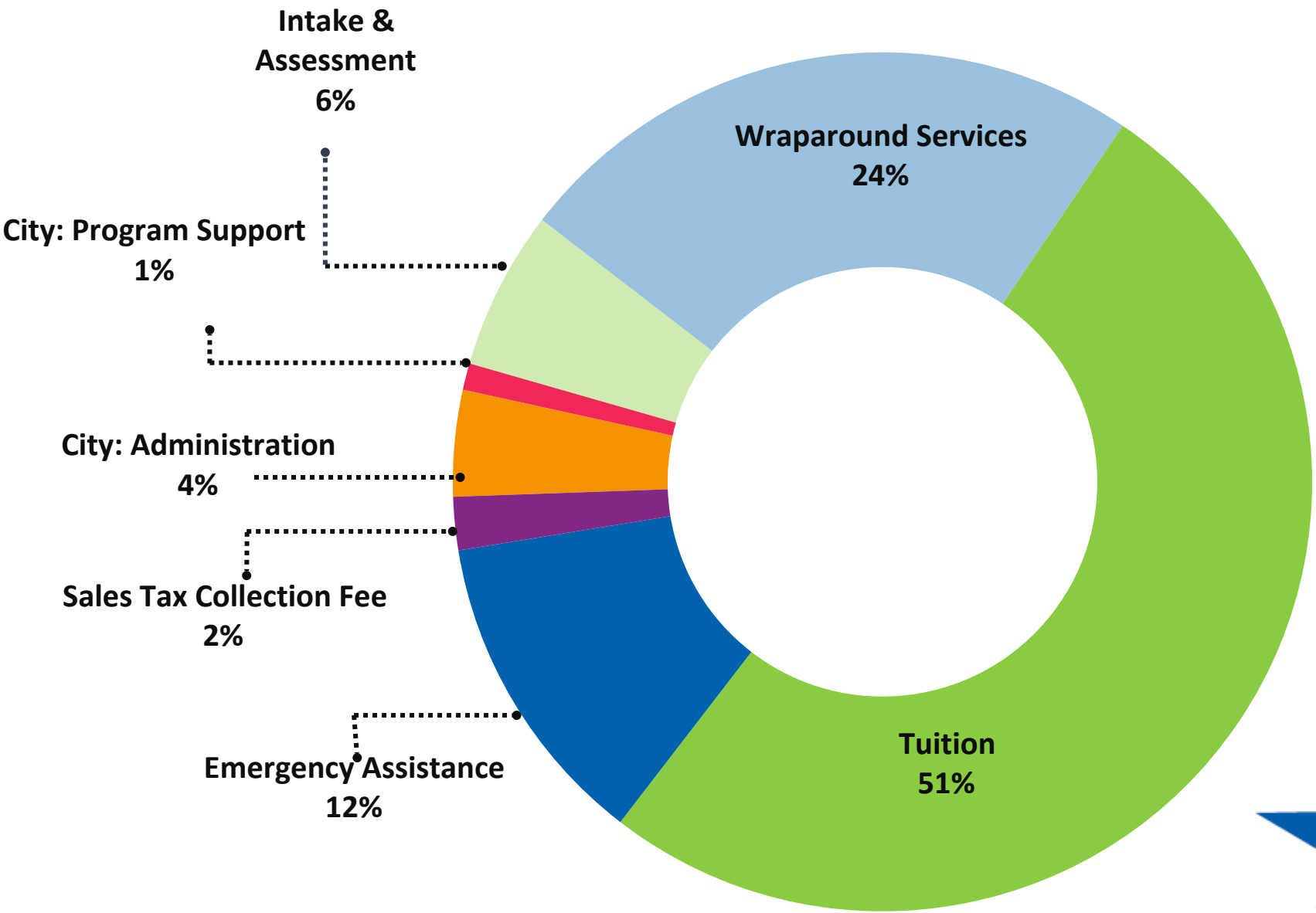
Bachelor’s Degree Program

- Annual cap of \$4,100 per Participant
- Individual Participant cap of \$12,300
- Available for Participants that have earned at least 60 college credits
- Not available for AlamoPROMISE scholars

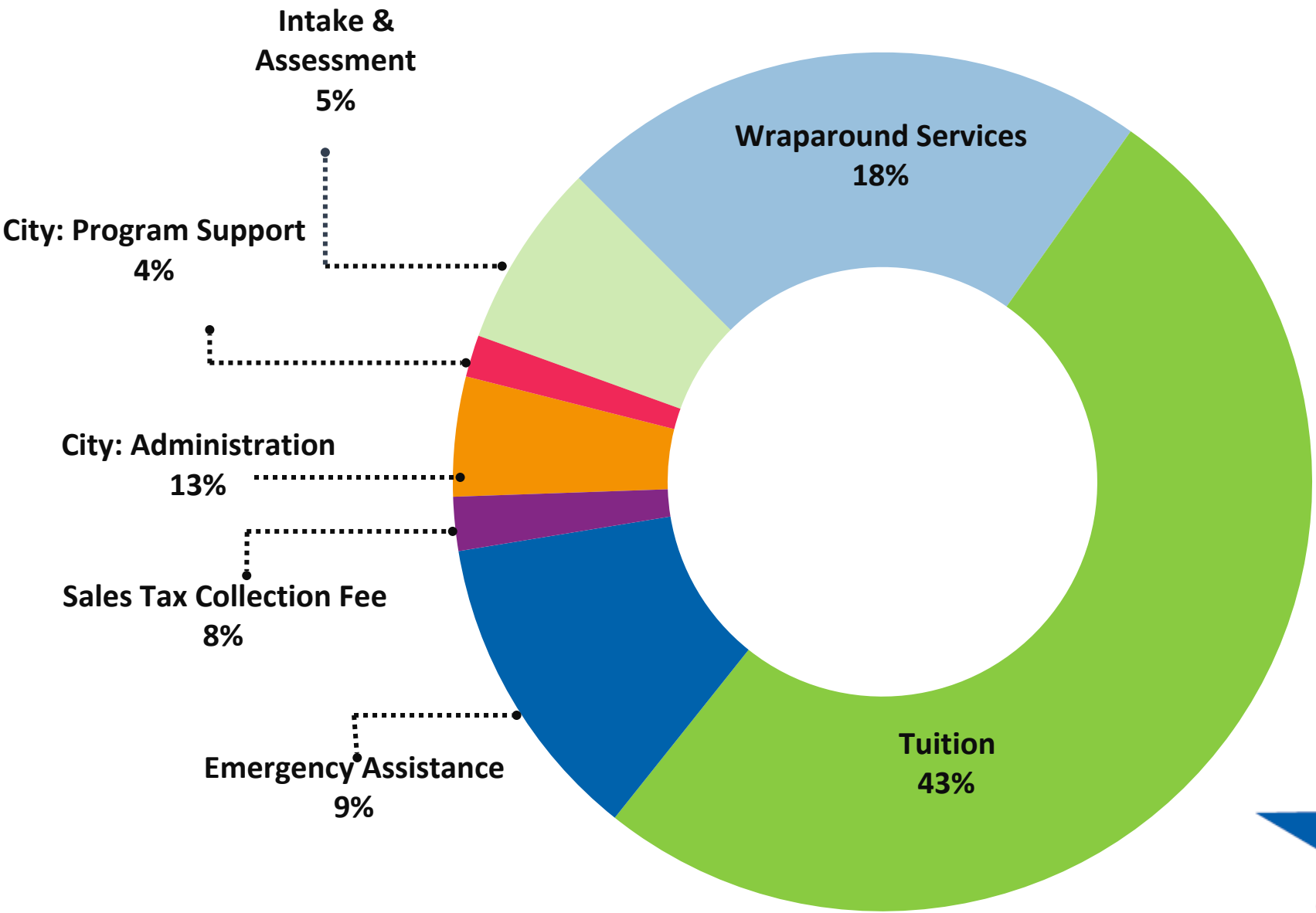
Program	Annual Cap	Total Cap
Certificate		\$5,000
Associate’s Degree	\$2,200	\$6,600
Bachelor’s Degree	\$4,100	\$12,300
Emergency Funding		\$1,500



FY21-FY27 Financial Forecast (\$217.4m)



FY 2023 Proposed Allocation (\$44.4m)





Pre-K 4 SA Board

Alejandra Lopez
Assistant City Manager
City of San Antonio



Performance Measures

- ✓ Unique **Applicants** (interviewed at intake)
- ✓ Participant **Training Slots** (sum of total educational opportunities available)
- ✓ Unique **Participants** (case managed over the program)
- ✓ Unique Participants that **Enrolled** in Approved Training Programs (100%)
- ✓ Unique Participants that **Exited** Approved Training Programs
- ✓ Unique Participants that **Successfully Completed** Approved Training Programs
- ✓ Percentage of Successful Approved **Training Completers** (at least 70%)
 - ✓ Unique Participants that Earned **Certifications/Credentials**
 - ✓ Unique Participants that Earned **Associate's Degrees**
 - ✓ Unique Participants that Earned **Bachelor's Degrees**
- ✓ Unique Completers **Employed** in Approved Job within 6 Months
 - ✓ (At least 80% of Approved Training Completers)
- ✓ Unique Employed Completers **Retained** 1 year after Placement in Approved Job
 - ✓ (At least 80% of Employed)
- ✓ Unique Participants that would **Recommend Program** to others upon Program exit
 - ✓ (At least 75% of Participants)

